



STOVE CARE  
and maintenance accessories





Stovax Chesterfield 5 Wide Multi-fuel stove

# A Warm Welcome...

*Stovax is a British company dedicated to the development of high quality stoves, fireplaces, flue systems and associated accessories. Over the past 39 years, Stovax has grown to become one of Europe's largest and most respected stove and fireplace manufacturers, constantly building on a reputation for superior craftsmanship, high quality materials, designer-led aesthetics and technical innovation.*



## A lifetime of looking good

Stovax stoves and fireplaces have been intrinsically designed to require very little maintenance. However, when there are things to be done, we have an extensive selection of accessories that can make short work of the task.

We also have a range of products available that you may wish to consider alongside your original purchase such as our magnetic flue pipe thermometer and our carbon monoxide detector.



## Looking after you and your stove...

A Stovax woodburning or multi-fuel appliance promises years of faithful service, a promise backed up by our extended five year warranty available across all our stoves and fires when purchased from a member of our Expert Retailer Network and registered with Stovax. We take great care to ensure that our stoves and fireplaces are designed, tested and manufactured to the highest possible quality and safety standards, and we are just as concerned to make certain that they are sold and installed correctly so that you enjoy years of pleasure from your purchase.

Our extensive design team and industry leading research and development laboratory ensure that Stovax products are at the very pinnacle of both aesthetic design and fireplace technology; offering

one of the largest and most trusted ranges of high efficiency stoves and fires available anywhere in the world. We pursue a programme of continuous product improvement, with our focus always on developing heating products that contribute to a cleaner, healthier environment. In fact, Stovax is ahead of schedule in its compliance with the European Ecodesign Directive.

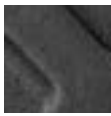
Whether you own a Stovax appliance or any other brand, it is important that you follow any servicing and general maintenance recommendations carefully to ensure your stove or fire continues to operate effectively and efficiently, indeed in many cases this will form part of your warranty agreement.

# Cleaning and maintenance products

## Stove Paint



Matt Black



Metallic Blue



Metallic Green



Metallic Brown



Metallic Black



Light Cast Grey



Storm Metallic



Matt Ivory



Anthracite



Product Code	Colour	Qty	Size	Suitable for	Serial Numbers
<b>STOVAX AEROSOL SPRAY PAINT</b>					
2010	Matt Black	1	400ml	Brunel	All
2056-6	Metallic Black	6	400ml	Brunel	All
2010	Matt Black	1	400ml	Huntingdon	All
2055	Matt Ivory	1	150ml	Huntingdon	All
2019-1	Matt Black	1	400ml	Regency	All
2019-6	Matt Black	6	400ml	Regency	All
2019	Matt Black	12	400ml	Regency	All
2019-1	Matt Black	1	400ml	Sheraton	All
2019-6	Matt Black	6	400ml	Sheraton	All
2019	Matt Black	12	400ml	Sheraton	All
2019-1	Matt Black	1	400ml	Stockton	CSTN (or) ASTN 10000 - 29999
2019-6	Matt Black	6	400ml	Stockton	CSTN (or) ASTN 10000 - 29999
2019	Matt Black	12	400ml	Stockton	CSTN (or) ASTN 10000 - 29999
2019BL	Metallic Blue	6	400ml	Stockton	All
2019BR	Metallic Brown	6	400ml	Stockton	All
2019GR	Metallic Green	6	400ml	Stockton	All
2105-1	Matt Black	1	400ml	Stockton	CSTN (or) ASTN 30000 onwards
RVAC011	Metallic Black	1	150ml	View	FVW 10000 - 29999
2000-1	Metallic Black	1	400ml	View	CVW 10000 - 29999
2105-1	Matt Black	1	400ml	View	CVW30001 (or) ASTN30001 onwards
2105-1	Matt Black	1	400ml	Vogue Small & Medium	All
2010	Matt Black	1	400ml	Vogue Midi	Prefixed DVG or CVG 10000 to 29999
2105-1	Matt Black	1	400ml	Vogue Midi	Prefixed DVG or CVG 30000 onwards
RVAC011	Metallic Black	1	150ml	Vision	All
2019-1	Matt Black	1	400ml	Riva Plus	FPR 10000 - 29999
2019-6	Matt Black	6	400ml	Riva Plus	FPR 10000 - 29999
2019	Matt Black	12	400ml	Riva Plus	FPR 10000 - 29999
2105-1	Matt Black	1	400ml	Riva Plus	FPR 30000 onwards
RVAC011	Metallic Black	1	150ml	Riva Cassette & Freestanding	All
RVAC010	Storm Metallic	1	150ml	Riva Cassette & Freestanding	All
RVAC011	Metallic Black	1	150ml	Studio 500, 1, 2 & 3	All
RVAC011	Metallic Black	1	150ml	Elise Cassette & Freestanding	All
2059-6	Matt White	6	400ml	-	-
<b>STOVAX BRUSH ON PAINT</b>					
2057-6	Matt Black	6	200ml	Classic FP	N/A
2067-6	Anthracite	6	400ml	-	-
PAINTLG	Laurel Green Enamel	1	15ml	Brunel & Huntingdon	All
PAINTBL	Midnight Blue Enamel	1	15ml	Brunel & Huntingdon	All

## Stove Paint



Midnight  
Blue  
Enamel

Laurel  
Green  
Enamel

Ivory  
Enamel

Alpina  
White

Phantom  
Grey

Ice  
Metallic

White  
Enamel

Grey  
Enamel

Gloss Black  
Enamel

Pure White  
Enamel

Product Code	Colour	Qty	Size	Suitable for	Serial Numbers
--------------	--------	-----	------	--------------	----------------

### DOVRE AEROSOL SPRAY PAINT

DV-LAKTB	Anthracite	1	400ml	Dovre - 225, 525, Vintage & Astroline	All
DV-LAKTBZ	Matt Black	1	400ml	Dovre - 250, 425, 500, 640, 700, 760, Tai & Sense	All

### LOTUS AEROSOL SPRAY PAINT

LT-9750PAINT	Metallic Black	1	400ml	Lotus	All
LT-9755PAINT	Light Cast Grey	1	400ml	Lotus	All
LT-9760APAIN	Ice Metallic	1	400ml	Lotus Living Stoves	All

### NORDPEIS AEROSOL SPRAY PAINT

NP-00001-102-400	Metallic Black	1	400ml	Nordpeis Uno & Duo Stoves	All
NP-00001-105	Black	1	150ml	Nordpeis (Excluding Uno & Duo)	All

### VARDE AEROSOL SPRAY PAINT

LT-9750PAINT	Metallic Black	1	400ml	Varde	All
LT-9755PAINT	Light Cast Grey	1	400ml	Varde	All

### YEOMAN AEROSOL SPRAY PAINT

2019-1	Matt Black	1	400ml	Yeoman	AYM10000 - 29999
2019-6	Matt Black	6	400ml	Yeoman	AYM10000 - 29999
2019	Matt Black	12	400ml	Yeoman	AYM10000 - 29999
2019BL	Metallic Blue	6	400ml	Yeoman	All
2019BR	Metallic Brown	6	400ml	Yeoman	All
2019GR	Metallic Green	6	400ml	Yeoman	All
2105-1	Matt Black	1	400ml	Yeoman	AYM30000 onwards
RVAC011	Metallic Black	1	150ml	Yeoman CL	Prefixed CCL or AYM or DYM 00001 - 04999
2000-1	Metallic Black	1	400ml	Yeoman CL	Prefixed CCL or AYM or DYM 05000 to CCL29999
2105-1	Matt Black	1	400ml	Yeoman CL	Prefixed CCL or AYM or DYM 30000 onwards

### BRUSH ON DOVRE PAINT

DV-PAINT/E3	Laurel Green Enamel	1	15ml	Dovre Stoves (250, 280 & 425)	All
DV-PAINT/E4	Black Enamel	1	15ml	Dovre Stoves (250, 280 & 425)	All
DV-PAINT/E5	Midnight Blue Enamel	1	15ml	Dovre Stoves (250, 280 & 425)	All
DV-PAINT/E10	Gloss Black Enamel	1	15ml	Dovre Sense Stoves	All
DV-PAINT/E12	Pure White Enamel	1	15ml	Dovre Sense Stoves	All
DV-PAINT/E8	White Enamel	1	15ml	Dovre Vintage Stoves	All
DV-PAINT/E14	Grey Enamel	1	15ml	Dovre Vintage & Sense Stoves	All

### BRUSH ON LOTUS PAINT

LT-9761PAINT	Phantom Grey	1	15ml	Lotus Living Stoves	All
LT-9762PAINT	Ice Metallic	1	15ml	Lotus Living Stoves	All
LT-9763PAINT	Alpina White	1	15ml	Lotus Living Stoves	All
LT-9764PAINT	Magic Black	1	15ml	Lotus Living Stoves	All



# Cleaning and maintenance products

## Slate Dressing



Code	Size & Quantity
4109-6	500ml x 6

## Fire Cement- 500g & 5kg tub

Black. Fire resistant up to 1250°C



Code	Size & Quantity
2020	500g x 12
2020-6	500g x 6
2024	5kg x 1

## Carbon Monoxide Detector

Easy to install & no maintenance required. Battery pre-fitted and guaranteed for 6 years



Code
3045

## Limestone Cleaner Spray



Code	Size & Quantity
5034-6	500ml x 6

## Fire Cement - 600g Cartridge



Code	Size & Quantity
2021-6	600g x 6
2021	600g x 12

## Smoke Pellets



Code	Quantity
4176	10 pellets

## Stove Glass Cleaner Spray

Suitable for all stove glass.



Code	Size & Quantity
4103-6	500ml x 6

## Protector - 1kg tub

Reduces the build-up of creosote in chimneys caused by burning wood. Reduces the risk of chimney fires



Code	Size & Quantity
7025	1kg x 6
7025-1	1kg x 1

## Stovax Stove Gloves

100% Cotton. Length 38cm



Code
4008

## Protector - Sachets



Code	Size & Quantity
7002-6	Pack (15 sachets) x 6

### Traditional Black Grate Polish

Wax-based graphite polish, giving a brilliant silver-black finish to cast iron stoves and fireplaces.



Product Code	Size and Quantity
4110-12	75ml x 12
4110-6	75ml x 6

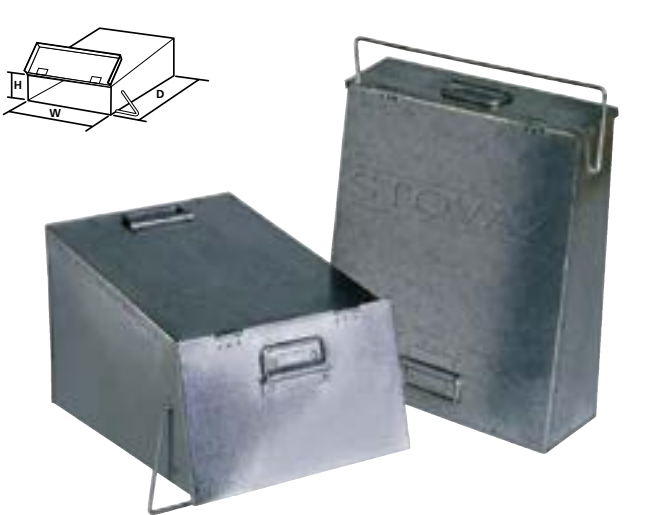
### Colloidal Black Stove Dressing

Water-based graphite coating for matt black stoves and fireplaces.



Product Code	Size and Quantity
7000-6	100ml x 6

### Ash Caddies\*



\*Whilst stocks last

Code	Width (W)	Height (H)	Depth (D)
4227	382mm (15")	102mm (4")	306mm (12")
4228	446mm (17½")	102mm (4")	306mm (12")
4229	382mm (15")	102mm (4")	459mm (18")
4230	637mm (25")	127mm (5")	408mm (16")
4231	306mm (12")	178mm (7")	459mm (18")



# Cleaning and maintenance products

## Fibreglass Insulation Tape



### White Tape

Code	Measurements
4254	40mm x 2mm x 25m

### Black Tape

Code	Measurements
4955	10mm x 2mm x 25m
4957	15mm x 2mm x 25m

### Self-adhesive White Tape

Code	Measurements
4299	25mm x 3mm x 25m
4197	40mm x 2mm x 25m

### Self-adhesive Black Tape

Code	Measurements
4953	10mm x 2mm x 25m
4954	15mm x 2mm x 25m
4997	20mm x 2mm x 25m

## Ceramic Fibre Sealing Strip



### White - Rolls

Code	Measurements
4093	10mm x 4mm x 10m
4471	6mm x 3mm x 10m

### White - Packs

Code	Measurements
7022	10mm x 4mm x 2m
7023	6mm x 3mm x 2m

## Thermic Seal



Code	Size & Quantity
5037	50ml x 12

## Fibreglass Rope Seal



### Standard Rope Seal - White

Code	Measurements
4660	3mm ø x 25m
4693	5mm ø x 25m
4019	6mm ø x 25m
4970	8mm ø x 25m
4020	9mm ø x 25m
4991	10mm ø x 25m
4021	12mm ø x 25m
4094	25mm ø x 10m
4096	16mm ø x 20m

### Standard Rope Seal - Black

Code	Measurements
4974	3mm ø x 25m
4977	6mm ø x 25m
4980	8mm ø x 25m
4994	10mm ø x 25m
4983	12mm ø x 25m
4671	16mm ø x 20m
4692	18mm ø x 20m
4672	25mm ø x 10m

### Soft Rope Seal - White

Code	Measurements
4959	4mm ø x 25m
4961	6mm ø x 25m
4963	8mm ø x 25m
4965	10mm ø x 25m

### Soft Rope Seal - Black

Code	Measurements
4670	14mm ø x 25m
4198	16mm ø x 25m
4200	13mm ø x 25m
4203	16mm x 10mm x 25m <sup>ø</sup>
4205	10mm x 25mm x 25m*

<sup>ø</sup> Square section rope  
\*P' profile rope seal pack

## Fibreglass Insulation Tape Pack



### Black Tape

Code	Measurements
4951	10mm x 2m
4952	15mm x 2m

### Self-adhesive Black Tape

Code	Measurements
4949	10mm x 2mm x 2m
4950	15mm x 2mm x 2m
4998	20mm x 2mm x 2m
5705	40mm x 2mm x 3.4m



## Rope Seal Packs (Includes glue & rope seal end tape)



### Standard Rope Seal - White

Code	Measurements
7019	3mm ø x 2m
7020	6mm ø x 2m
4971	8mm ø x 2m
7021	9mm ø x 2m
4992	10mm ø x 2m
7024	12mm ø x 2m
5001	16mm ø x 2m

### Standard Rope Seal - Black

Code	Measurements
4975	3mm ø x 2m
4978	6mm ø x 2m
4981	8mm ø x 2m
4995	10mm ø x 2m
4984	12mm ø x 2m
4999	14mm ø x 2m

### Soft Rope Seal - White

Code	Measurements
4945	4mm ø x 2m
4946	6mm ø x 2m
4947	8mm ø x 2m
4948	10mm ø x 2m

### Soft Rope Seal - Black

Code	Measurements
5000	14mm ø x 2m
5700	13mm ø x 2m
5701	16mm ø x 2m
5702	13mm x 2.6m
5703	10mm x 750mm*
5704	13mm ø x 3.5m

\*'P' profile rope seal pack



## How to re-rope your door seal video

A thermal rope is used to provide a heat resistant air tight seal on the appliance doors and also is often used to provide a seal for the stove or fire glass, essential to ensure your appliance works as intended and with optimum efficiency. Stovax have created a useful step by step video to help lead you through the simple maintenance task of re-ropeing a door seal, simply visit **www.stovax.tv** and enter the video code **V0008**.

**Top tip:** To allow your rope adhesive time to properly cure, leave it a minimum of 12 hours before burning your appliance.



## Flue Dampers



Code	Width
3068	100mm (4")
3060	125mm (5")
3061	150mm (6")
3062	175mm (7")
3063	200mm (8")

## Magnetic Flue Pipe Thermometer



**Code**  
3046

## Replacement Stove Glass

---

We stock replacement glass for the full range of Stovax and Gazco stoves alongside a wide selection of stove glass for other branded models. Please refer to the Stovax Accessories price list for details. Alternatively you can visit [www.stovaxspares.com](http://www.stovaxspares.com) or [www.gazcospares.com](http://www.gazcospares.com).

### 5mm Ceramic Glass Panels



# Chimney Rods and Brushes

## Uni Rod

UNI rods need adaptor 4034 and must always be rotated clockwise to avoid disconnection.



Code	Measurement
4036	915mm (36")

## Lockfast Rod

LOCKFAST rods need adaptor 4035 and can be rotated in either direction



Code	Measurement
4037	915mm (36")

## Adaptors



Code	Description
4034	UNI (left)
4035	LOCKFAST (right)

## Steel Brush Head 5 - 8"



Code	Measurements
4171	125mm (5")
4172	150mm (6")
4173	175mm (7")
4174	200mm (8")

## Polypropylene Brush Head 5 - 8"



Code	Measurements
4030	125mm (5")
4031	150mm (6")
4032	175mm (7")
4033	200mm (8")

## Polypropylene Brush Head - 12" & 16"



Code	Measurements
4039	305mm (12")
4038	405mm (16")





# Log Holders & Fire Screens

## Black Log Holders



Code	Width	Height	Depth
3404 (Highline)	300mm (12")	1000mm (39 3/8")	300mm (12")
3403 (Medium)	300mm (12")	750mm (29 1/2")	300mm (12")
3402 (Small)	300mm (12")	500mm (19 5/8")	300mm (12")

## Curved Black Log Holder - Small



Code	Width	Height	Depth
3400	444mm (17 1/2")	209mm (8 1/4")	300mm (12")

## Glass Straight Fire Screens\*



Code	Width	Height
GSFL22	560mm (22")	588mm (23")
GSFL26	660mm (26")	508mm (20")
GSFL30	760mm (30")	588mm (23")

\* Whilst stocks last. Do not place within 300mm (12") of fire where temperature exceeds 200°C

## Glass Curved Fire Screens\*



Code	Width	Height	Depth
GSCU22	570mm (22 1/2")	500mm (20")	110mm (4")

\* Whilst stocks last. Do not place within 300mm (12") of fire where temperature exceeds 200°C

# Fireplaces for all interiors

Whether you want to restore a period house to its former glory, or create an authentic look for a modern home, let Stovax's Classic Fireplaces inspire you.

We also pride ourselves on the fact that each remains an individual masterpiece, hand-cast to the same specification as Georgian and Victorian originals, and extensively finished to display a wealth of intricate detail.

Alternatively, we also offer fireplaces with the most up-to-date design to complement modern interiors. In several cases, Stovax

have added a 21st Century slant to the design to make them even more appropriate to today's homes and lifestyles.

For further information or to request a brochure, simply contact your local retailer or visit [www.stovax.com](http://www.stovax.com).



Details on the full range of products available and brochure PDF's can be found at the websites detailed above. Alternatively, you can visit [www.stovax.com/brochures](http://www.stovax.com/brochures) to view our whole range of brochures.



## Professional XQ™

### Stove & Fireplace Chimney Systems

Stovax also offer a comprehensive range of stove & fireplace chimney systems, the Stovax Professional XQ™ collection. These comprise an extensive selection of vitreous enamelled single skin flue pipe, alongside our high-quality twin wall chimney system components crafted from 304L grade stainless steel for a durable outer finish. The fully sealed twin wall components offer water tight protection for the insulation within.

With innovative decorative options, the ability to specify a colour for your system and with a host of technical advancements such as their Twist-Lock system, the Professional XQ™ range provides an attractive, versatile and reliable solution for your flue system.

Furthermore, the Professional XQ™ range carries a 10 Year Extended Warranty offering complete peace of mind.

All of the Professional XQ™ range is set out in a separate brochure, which can be downloaded from [www.stovax.com/brochures](http://www.stovax.com/brochures).

#### Extensive Colour Range



Stovax offers 4 standard powder coating colours. For internal twin wall components, Textured Matt Black; and for external components, Satin Black, Gloss Black and Satin White. However, all external parts can be powder coated to any colour in the RAL range. For example:



RAL is a European colour matching system mainly used for paint and powder coating.



Rain cowls



Storm collars



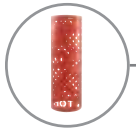
Flashings



Vaulted Rafter Supports



Elbows



Flue Enclosures



Floor & Ceiling Plates & Shields



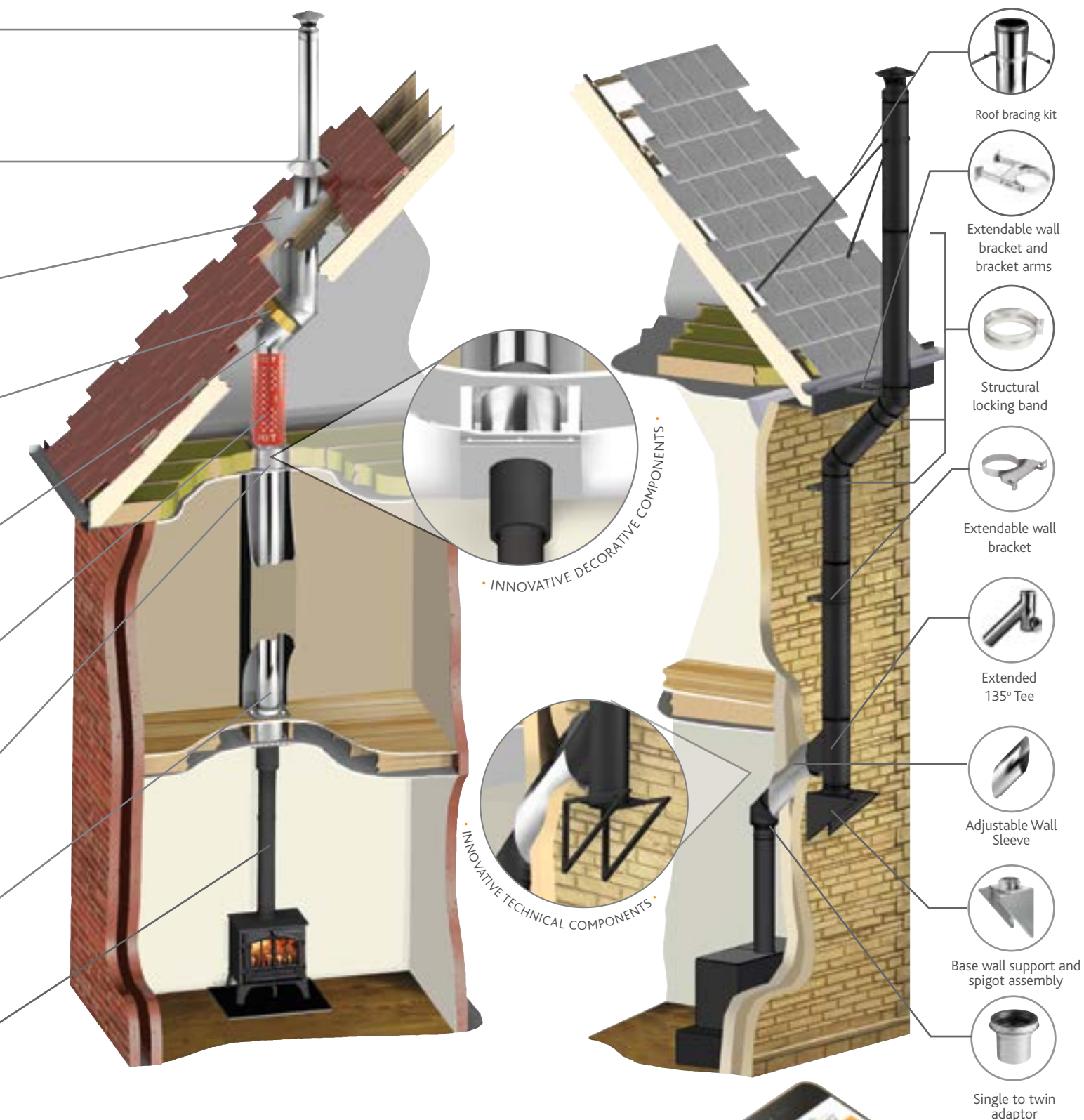
Straight lengths



Enamelled flue pipes

**10**  
**YEAR**  
**EXTENDED**  
**WARRANTY**





## XQ FlueDesigner™ App (for Specifiers)

Stovax has developed an easy to use app that can generate a specification and drawing for your Professional XQ™ installation on iOS and Android mobile devices. Exclusively designed for use by Stovax's network of independent retailers and specifiers, this handy tool provides a drawing, component list, quotation and more based upon the information provided about the installation.







Stovax Limited, Falcon Road, Sowton Industrial Estate, Exeter, Devon, England EX2 7LF

Trade Sales Tel: 01392 474000 • Export Sales Tel: 00 44 1392 261990 • Other Depts Tel: 01392 474011

Email: [info@stovax.com](mailto:info@stovax.com) • [www.stovax.com](http://www.stovax.com)



To view or download our complete range of brochures, simply visit [www.stovax.com](http://www.stovax.com)

Paper sourced from sustainable forests and printed using vegetable based inks

© All material copyright Stovax Limited 2020 E & O E A member of the Stovax Group.

ACCE1220

